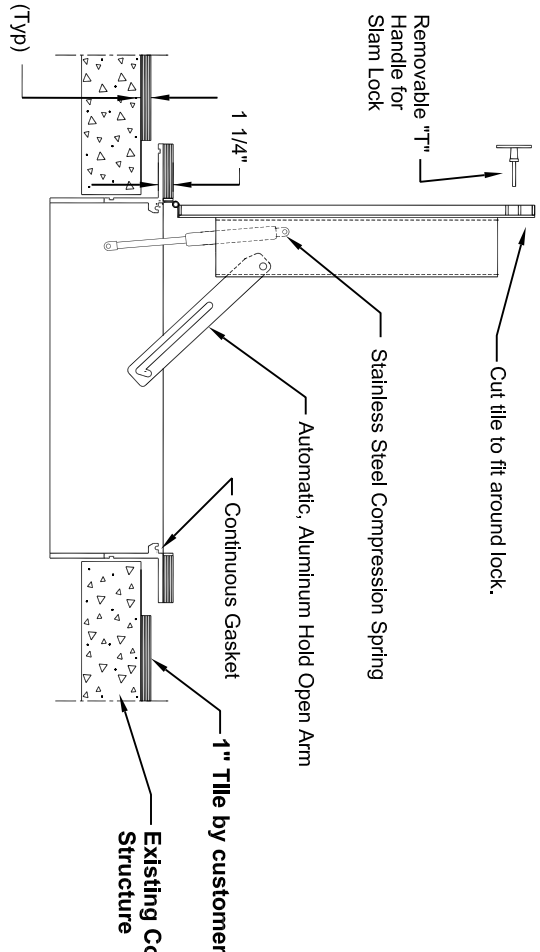
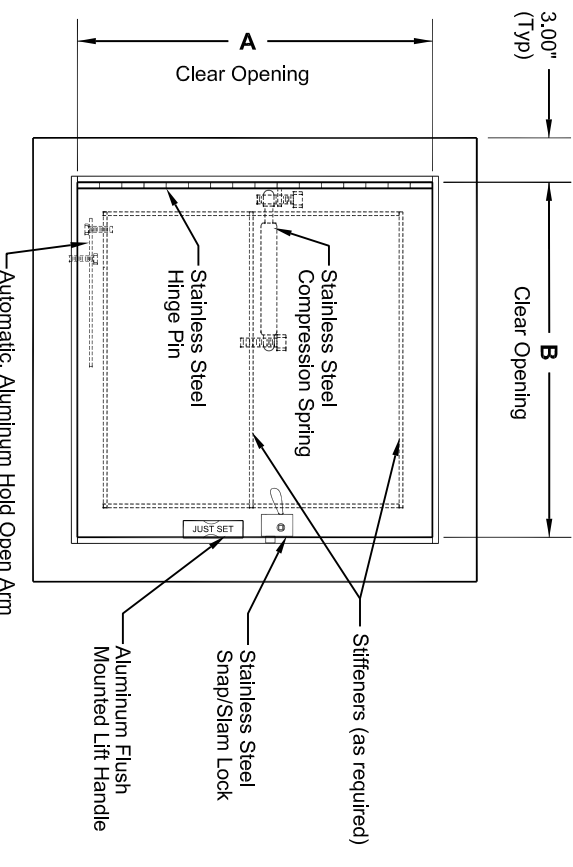


Fax to:	Customer	Approved/Notes
From	Project	Pennsylvania Insert Corp PO Box 199 Spring City PA 19475 tel: 610-948-9688 fax: 610-948-9750
Date	Job#	
PA Insert Quote/Order#	Ship Date	email: sales@pennsylvaniainsert.com web: www.pennsylvaniainsert.com
Page _____ of _____		

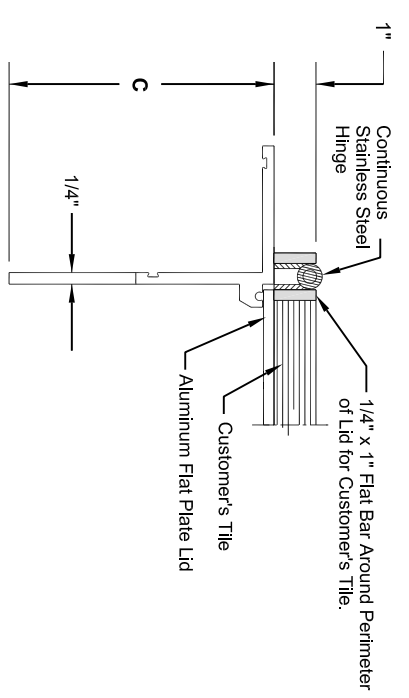
"Just Set" ALUMINUM TERRAZZO RETROFIT DOOR, LIGHT DUTY - SINGLE LEAF



- 3/16" Flat Plate Lid Reinforced for 150 lb/sq ft live load
- 6" Angle Frame with 1" Recessed Pan for Customer's Tile
- Protective Barrier where Concrete meets Aluminum
- Stainless Steel Compression Spring
- Stainless Steel Hinge Pin
- Stainless Steel Hardware
- Type 316 Stainless Steel Snap Lock
- Automatic, Hold Open Arm
- Aluminum Flush Mounted Lift Handle
- 5 Year Warranty

STANDARD DIMENSIONS				STOCK#
QTY	A	B	C	
	24"	24"	6.00"	AERL2424S
	30"	30"	6.00"	AERL3030S
	36"	36"	6.00"	AERL3636S

- ### OPTIONS
- Skirting for _____" Slab
 - Insulation
 - Safety Chains & Posts
 - Stainless Steel Pneumatic Assist
 - Anodizing
- ### LOCK OPTIONS
- Staple For Padlock
 - Recessed Hasp
 - Keyed Deadbolt Lock
 - Pentahed Lock
 - Heavy Duty Security Lock



*Installation shall be in accordance with manufacturer's instructions

NO SCALE

HINGE/FRAME DETAIL

