

Fax to:

Customer

Approved/Notes

PO Box 199

Fax#

Project

Spring City PA 19475

From

Job#

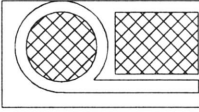
Ship Date

Date

PA Insert Quote/Order#

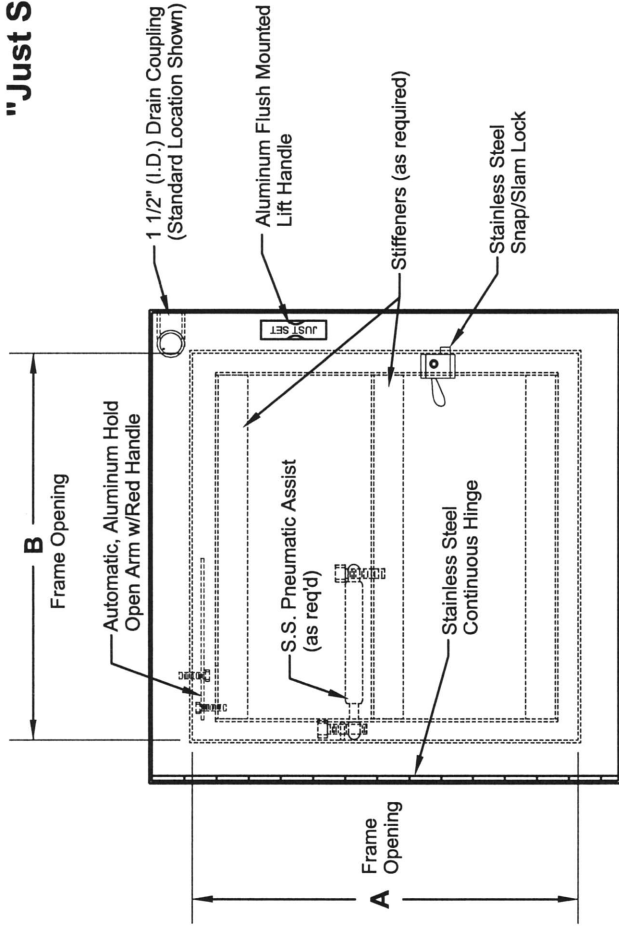
Page ___ of ___

email: sales@pennsylvaniainsert.com
web: www.pennsylvaniainsert.com

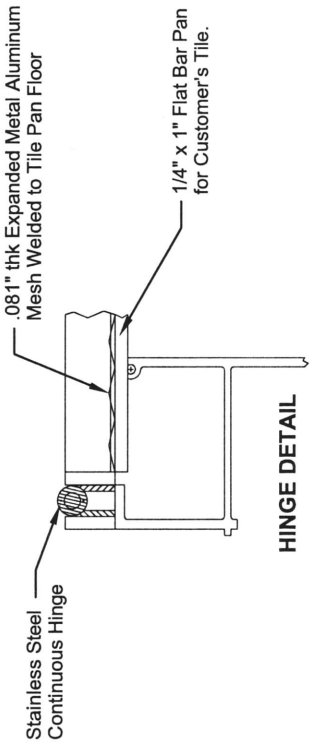
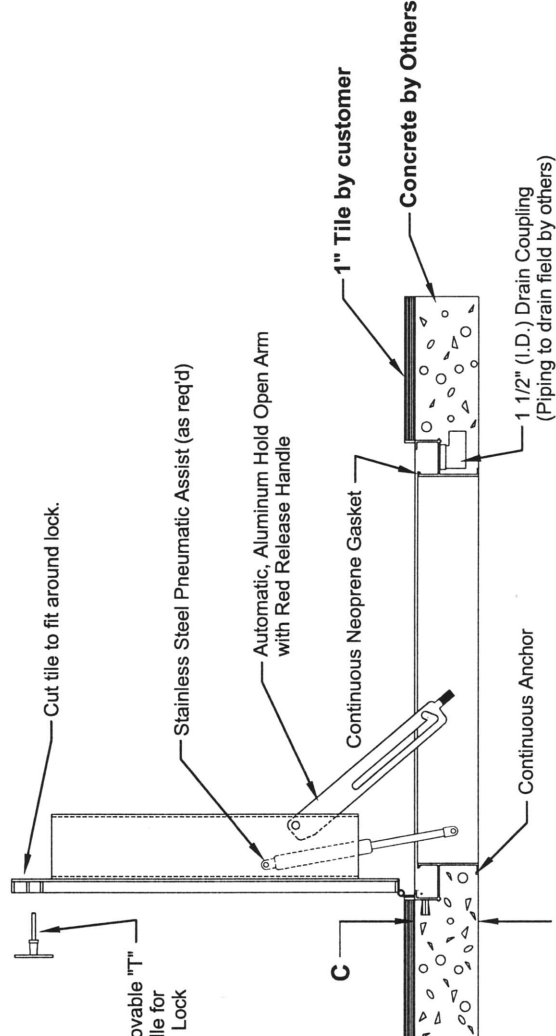


"Just Set" ALUMINUM TERRAZZO DOOR, LIGHT DUTY, SINGLE LEAF

- 3/16" Flat Plate Lid Design Reinforced for 150 lb/sq ft live load
- Drain Trough Frame with Gasket for Water Resistance
- Frame is 6" Deep with 1" Recess Pan for Customer's Tiles.
- Protective Barrier where Concrete meets Aluminum
- Continuous Anchor to Lock Frame into Concrete
- Stainless Steel Pneumatic Assist (as req'd)
- Stainless Steel (Butt Style) Hinges & Hinge Pin Anchored in Concrete with Steel Inserts.
- All Type 304 Stainless Steel Hardware
- Type 316 Stainless Steel Snap Lock
- 1-1/2" (I.D.) Drain Coupling
- Automatic, Hold Open Arm w/Red Release Handle
- Aluminum Flush Mounted Lift Handle



STANDARD DIMENSIONS				
QTY	A	B	C	STOCK#
	24"	24"	6.00"	AEL2424S
	30"	30"	6.00"	AEL3030S
	36"	36"	6.00"	AEL3636S



NO SCALE

12/08