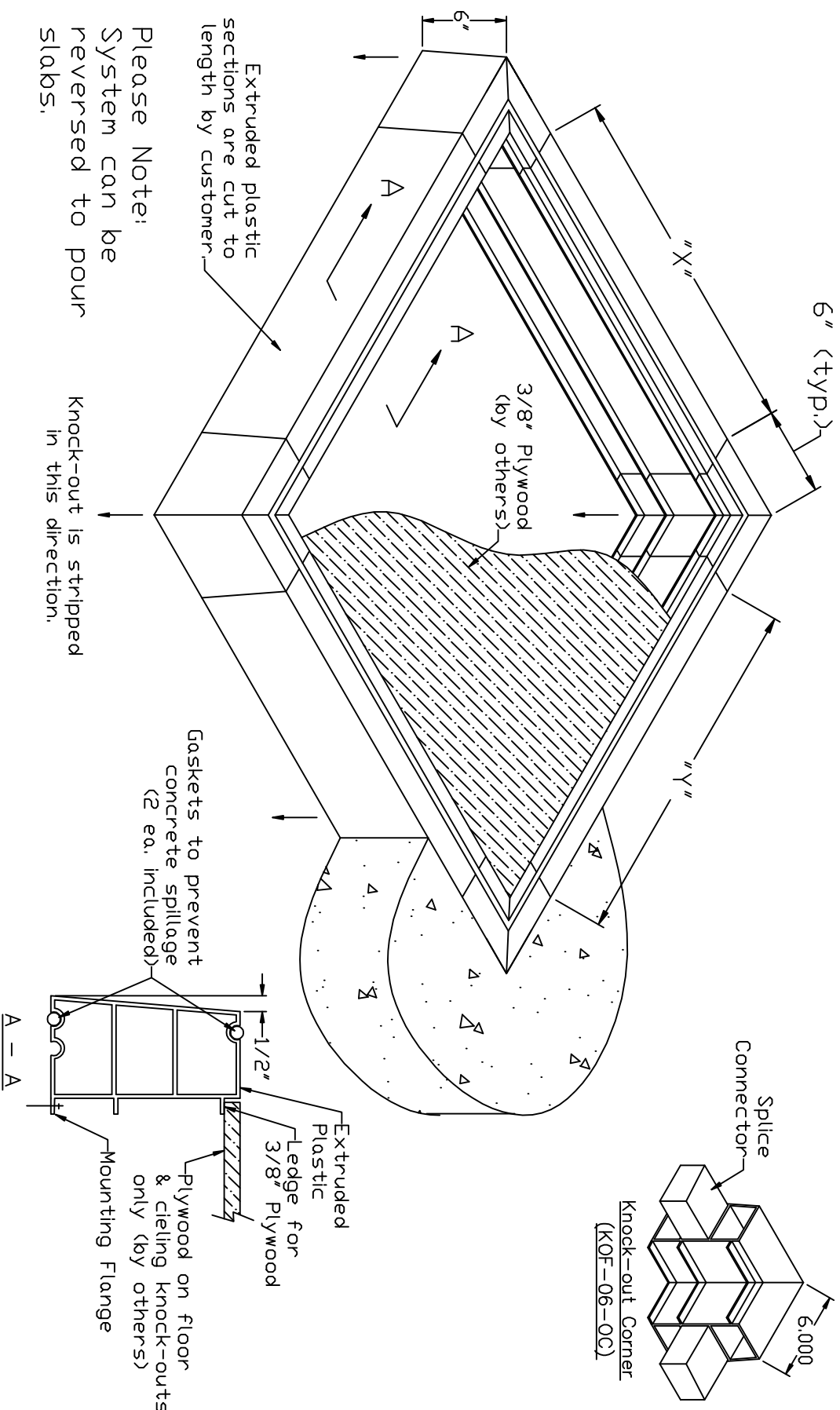


Date:	Customer:
Rev 1:	Job:
Rev 2:	Owner:

## Adjustible Knock-out

You can find this information online at: [pennsylvaniainsert.com](http://pennsylvaniainsert.com)  
or email your request to: [sales@pennsylvaniainsert.com](mailto:sales@pennsylvaniainsert.com)

**Pennsylvania Insert**  
 PO Box 199  
 Spring City, PA 19475  
 P. 610.948.9688  
 F. 610.948.4975



Extruded plastic sections are cut to length by customer

Please Note:  
System can be reversed to pour slabs.

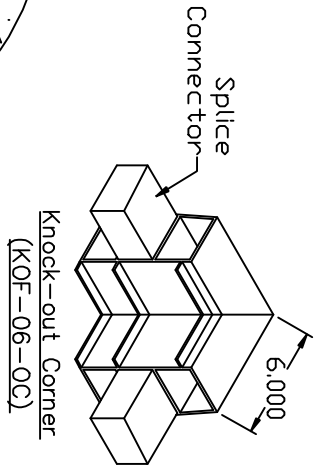
Knock-out is stripped in this direction.

Gaskets to prevent concrete spillage (2 ea. included)

Extruded Plastic  
Ledge for 3/8" Plywood

Plywood on floor & ceiling knock-outs only (by others)

Mounting Flange



**SPECIFICATIONS:**  
 Opening shall be formed in concrete slab (wall) using an Adjustable Knock-out system as manufactured by Pennsylvania Insert Corp, Spring City, PA. Knock-out shall be manufactured from high strength plastic extrusion with a tapered surface for easy removal after casting. Knock-out shall have an integral ledge for mounting a 3/8" plywood panel when the Knock-out is used in the horizontal position for floor or ceiling penetrations. It shall also have a flange at the bottom to be used as a nailer to immobilize the member. It shall also have removable gaskets on both the top and bottom to prevent concrete spillage. Corners shall be prefabricated.