

PA Insert Corp
 PO Box 199
 Spring City PA 19475
 tel: 610-948-9688
 fax: 610-948-4975

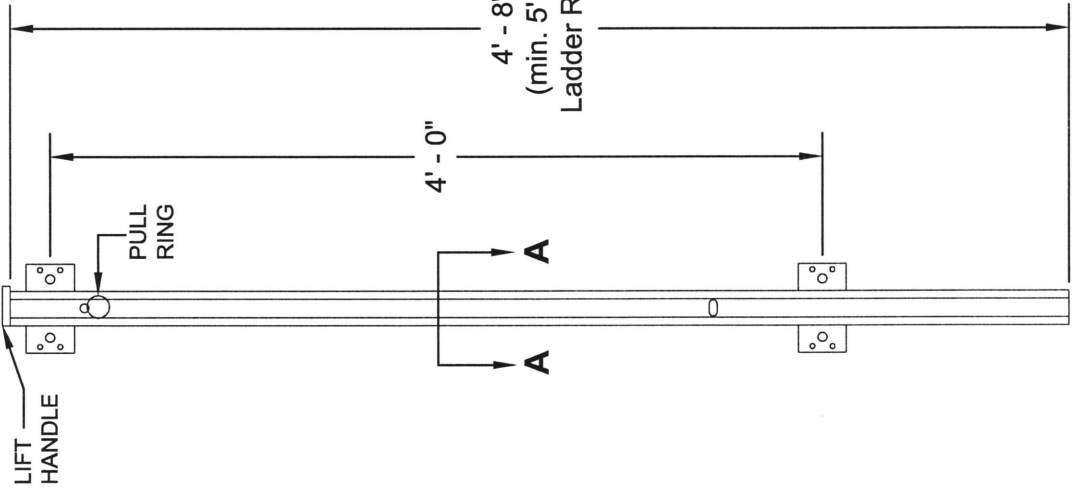
email: sales@pennsylvaniainsert.com
 web: www.pennsylvaniainsert.com

Approved/Notes

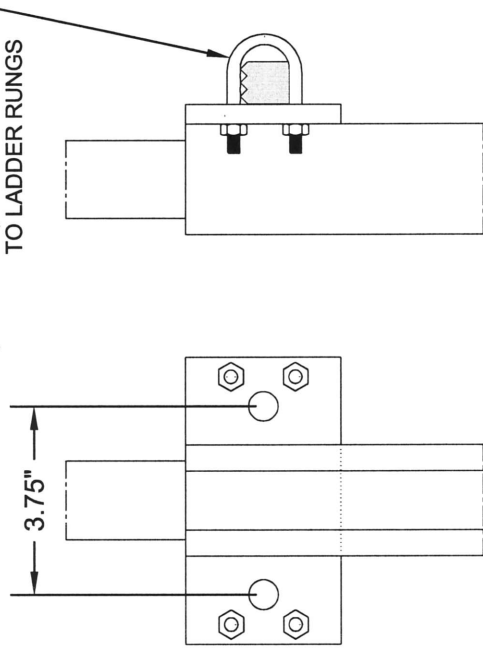
Fax to:	Customer
Fax#	Project
From	Job#
Date	PA Insert Quote/Order#
	Page _____ of _____

ALUMINUM -BOLT ON- LADDER EXTENSION

- ALL ALUMINUM CONSTRUCTION
- STAINLESS STEEL HARDWARE
- MINIMUM 5' - 0" LADDER REQUIRED

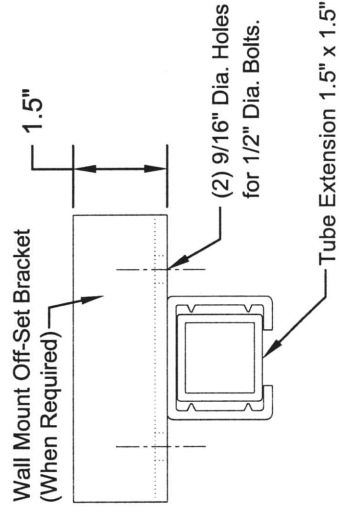


ELEVATION

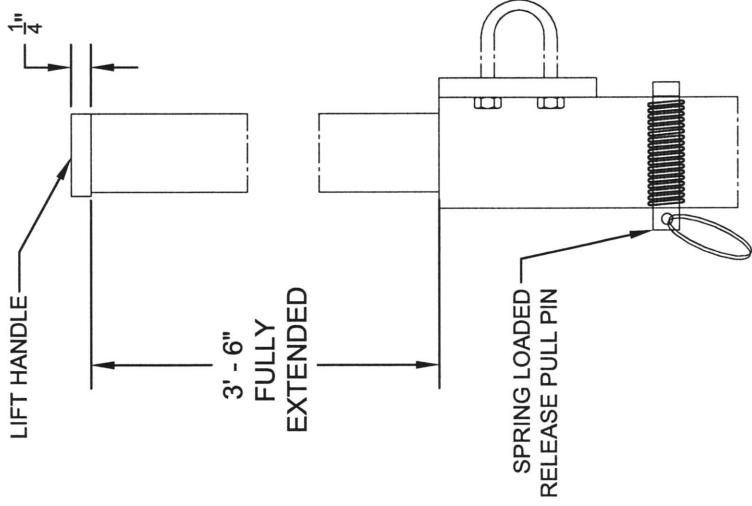


STAINLESS STEEL U-BOLTS
 (PROVIDED) FOR MOUNTING
 TO LADDER RUNGS

MOUNTING BRACKET DETAILS



SECTION A - A



LOCK & EXTENSION DETAIL