

**Pennsylvania Insert Corp**

PO Box 199  
Spring City PA 19475  
tel: 610-948-9688  
fax: 610-948-4975

email: sales@pennsylvaniainsert.com  
web: www.pennsylvaniainsert.com

Approved/Notes

Customer

Project

Job#

PA Insert Quote/Order#

Ship Date

Page \_\_\_\_\_ of \_\_\_\_\_

Fax to:

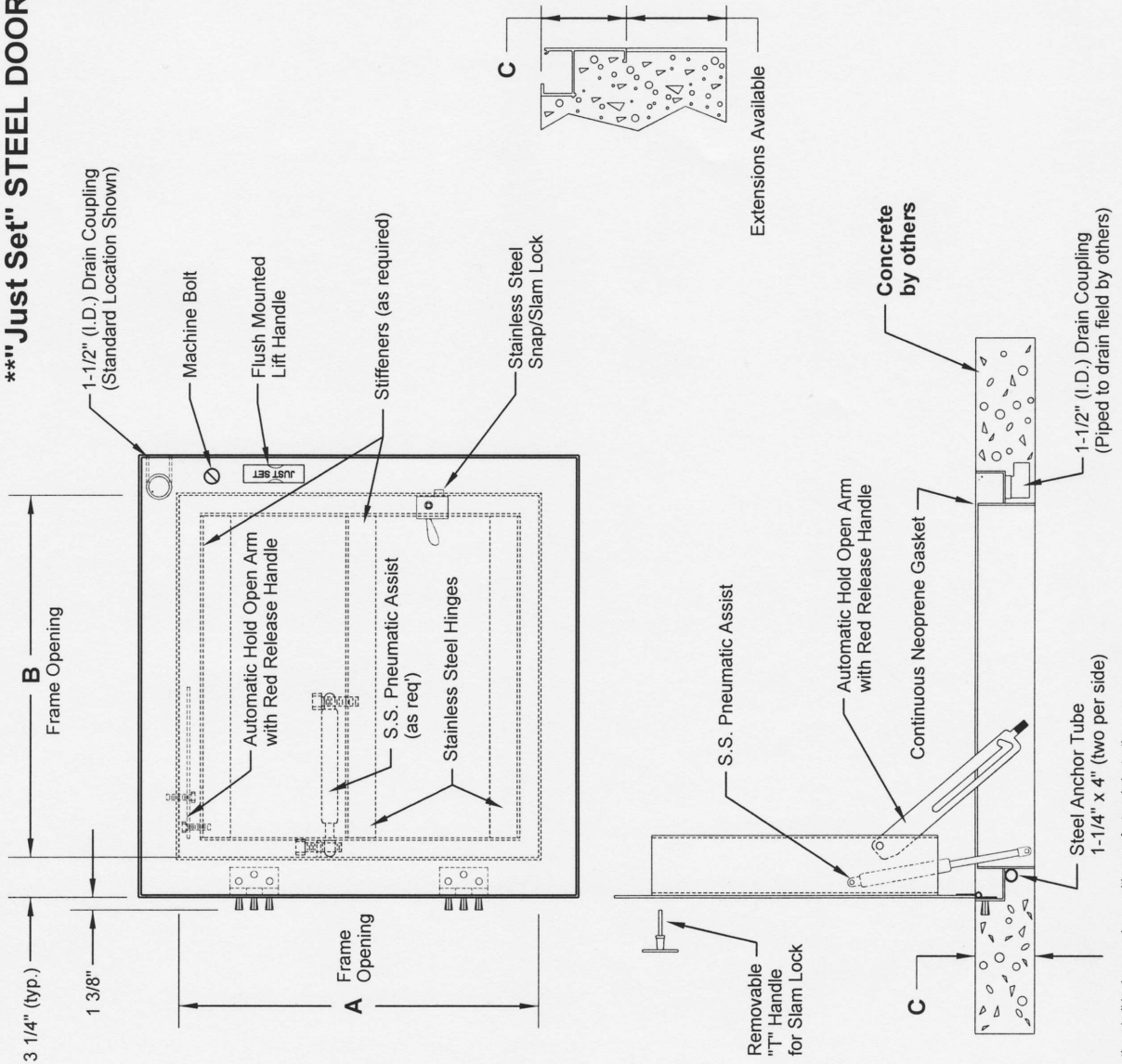
Fax#

From

Date

## \*\*\*" Just Set" STEEL DOOR, HEAVY DUTY, SINGLE LEAF - TROUGH FRAME

- 3/8" Diamond Plate Lid Reinforced for HS-20 Wheel Loading plus an Additional 30% Live Load Impact
- Drain Trough Frame with Gasket
- Welded Anchors Lock Frame into Concrete
- Stainless Steel Pneumatic Assist (as req'd)
- Stainless Steel Hinges
- Stainless Steel Hardware
- 316 Stainless Steel Snap Lock, Machine Bolt Lock
- 1-1/2" (I.D.) Drain Coupling
- Automatic Hold Open Arm with Red Release Handle
- Flush Mounted Lift Handle
- Red Primer Finish Standard



STANDARD DIMENSIONS					
QTY	A	B	C	STOCK#	
	24"	24"	6-5/8"	STH2424S	
	30"	24"	6-5/8"	STH3024S	
	30"	30"	6-5/8"	STH3030S	
	36"	30"	6-5/8"	STH3630S	
	36"	36"	6-5/8"	STH3636S	
	42"	42"	6-5/8"	STH4242S	
	48"	30"	6-5/8"	STH4830S	
	48"	36"	6-5/8"	STH4836S	

\*\*Installation shall be in accordance with manufacturer's instructions

NO SCALE

10/25/06