

Fax to:

Customer

Approved/Notes

PA Insert Corp

Fax#

Project

PO Box 199
Spring City PA 19475

From

Job#

Ship Date

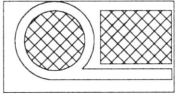
tel: 610-948-9688
fax: 610-948-4975

Date

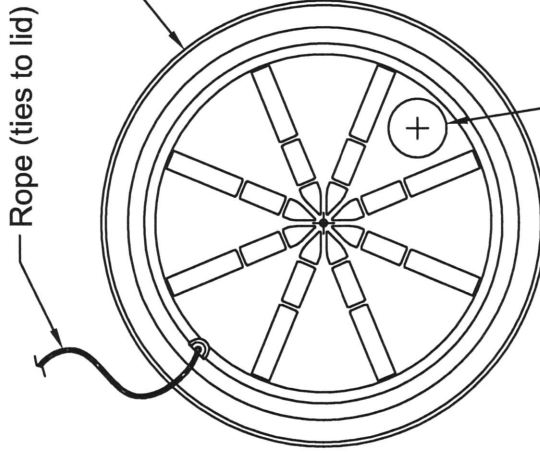
PA Insert Quote/Order#

Page ___ of ___

email: sales@pennsylvaniainsert.com
web: www.pennsylvaniainsert.com



NEW PLASTIC SUMP



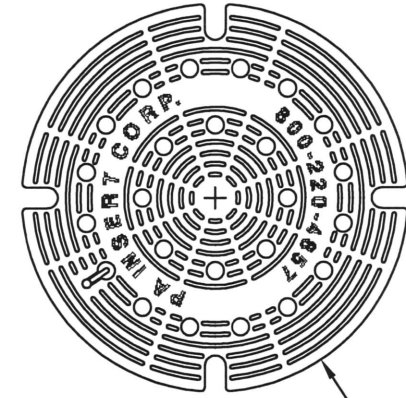
TOP

BASE:

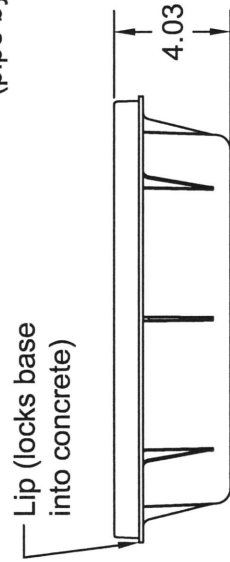
- Material - Propylene
- Rope connects to lid
- Lip positively locks base into concrete
- 2" knock out hole in base for optional drain pipe (drain pipe by others)

LID:

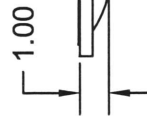
- Material - 30% Glass filled Propylene
- Top surface has raised areas to provide traction
- Ribbed construction provides increased strength and rigidity



3D VIEW



SIDE



LID

BASE

Ø2.00 knock out for optional drainage pipe (pipe by others)

Ø15.23

Ø13.25

Lip (locks base into concrete)

4.03

1.00