

PULLING IRON POCKETS

SAVE SPACE & MONEY The Pocket is an accessory to the Pulling Iron. It allows the pulling iron to be installed within the wall without having to cut big holes in expensive steel forms. Utilities will like it too because it saves space in the manhole and eliminates any trip hazard.

SAVINGS ADD UP A unique advantage of PA Insert's Pocket accessory is that the Pocket Lid is removable and reusable. Use the lid twice and you have cut the price in half.

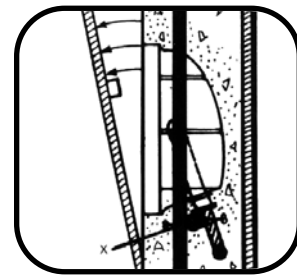
USEFUL TIPS

- To ensure maximum hook area, have 2.5" between back of pocket & pulling iron.
- Pocket is not recommended for walls thinner than 6".
- Contact PA Insert for detailed installation instructions.

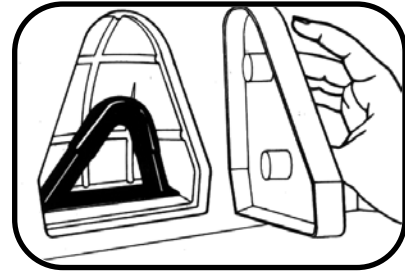
TO ORDER CALL 1-800-220-4857
or sales@pennsylvaniainsert.com



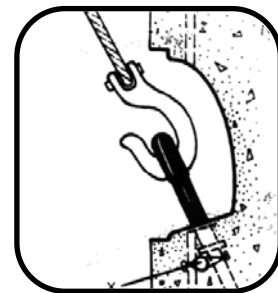
- 1.** Assemble the Pocket and Pocket Lid, then slide the Pulling Iron through the slot at the bottom of the Pocket. Wire the Pulling Iron to the cage.



- 2.** Make sure the Pulling Iron is wired in such a way that it angles toward the Pocket Lid and cannot slide back.



- 3.** Wire the Pocket and Lid assembly flush against the form wall. Lid pops off for reuse.



- 4.** Leaving you with a nice and tidy recessed hook.